

# Revolutionizing Tire Chain Solutions

---

**DUSAWIN™**

About Us

## Who We Are

---

Established in 2016, Dusawn is a forward-thinking company with a vision to revolutionize tire chain solutions. Committed to affordability, reliability, simplicity, and cutting-edge technology, we aim to redefine the tire traction device industry, offering innovative solutions that set new standards for excellence.





# Meet the Team

---



**CHARLES ANDERSON**  
Co-Founder and CEO



**KRISTINE IM**  
Co-Founder & Managing Director



# Challenges with Existing Solutions

## **AFFORDABILITY**

Automated tire traction solutions have a high purchase and installation cost per vehicle

## **MAINTENANCE**

Elevated ongoing maintenance expenses and frequent maintenance interventions

## **DOWNTIME**

Vehicle downtime causes inconvenience and a loss of operational revenue

## **OPERATIONAL CHALLENGES**

Increased vehicle weight, heightened complexity, and requires specialized user training

# Existing Automatic Tire Chain Solutions Have Limited Market Penetration

FMCSA REGISTERED TRUCKS IN 45 US STATES

## Summary



1,850,296  
Carriers



8,218,111  
Drivers

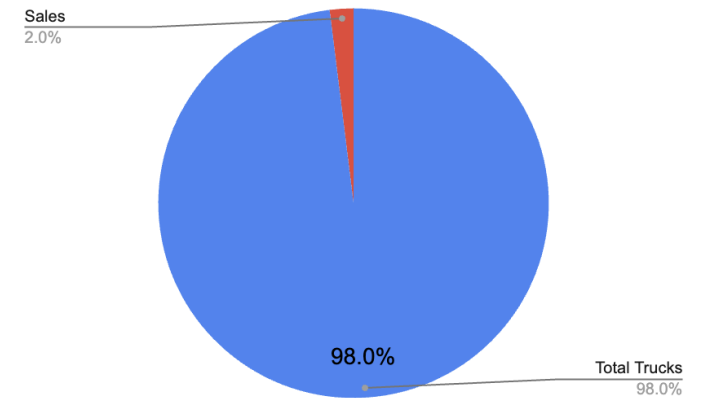


As of 01/26/2024

## Existing Automatic Tire Chains Primary Customer Base

Government vehicles such as school buses, fire trucks, ambulances, and passenger motorcoaches.

## AUTOMATIC TIRE CHAIN CURRENT MARKET PENETRATION



BARRIERS TO ENTRY DUE TO HIGH COSTS AND COMPLEXITIES.

# We're Ready to Make a Difference



**DIRECT FULLFILLMENT**



**AFFORDABILITY**



**ADJUSTABILITY**



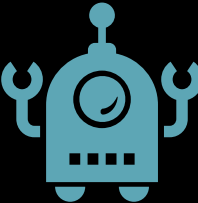
**END-USER INSTALLATION**



**LOW MAINTENANCE**



**EASE OF USE**



**POWER OF AI**



**DATA INTEGRATION  
CAPABILITIES**

**+ MORE**

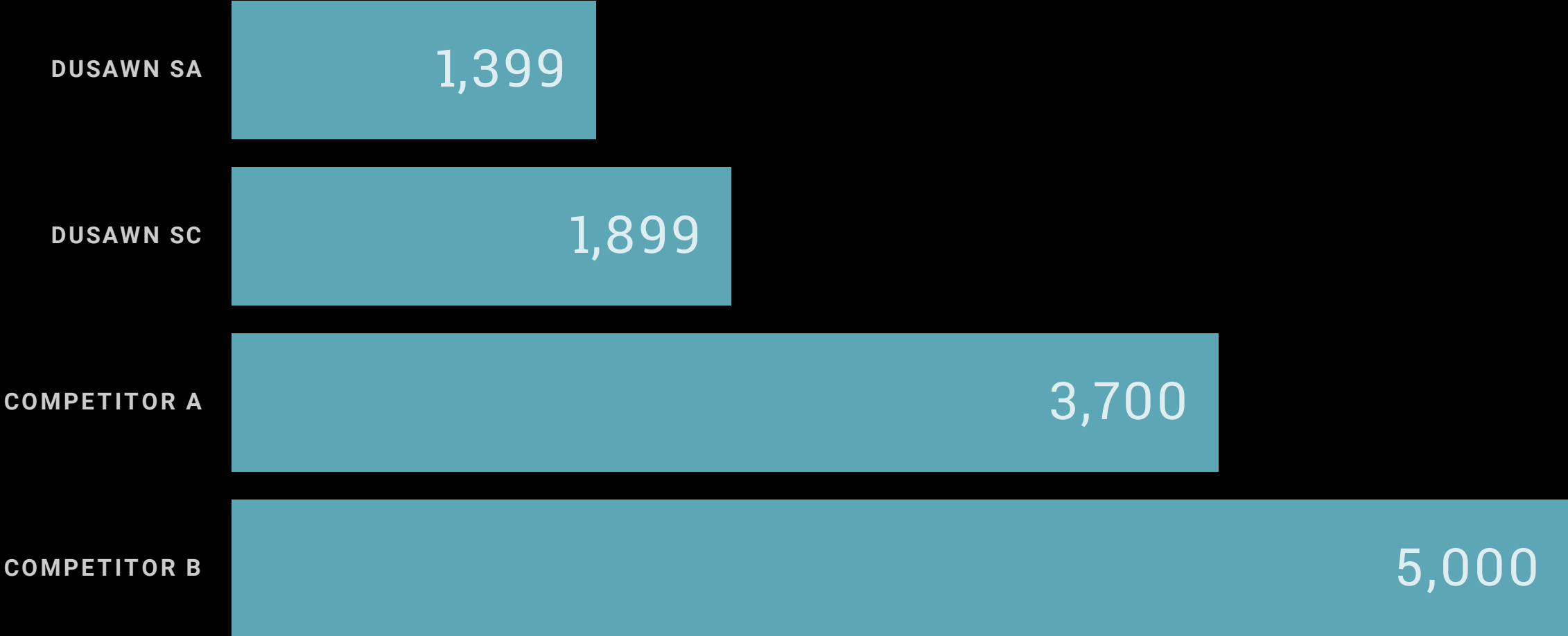
“With a commitment to the well-being of truck drivers, our tire traction solutions seamlessly blend affordability with enhanced convenience and safety, prioritizing the needs of those who keep our economy moving forward.”

DUSAWN



# Competitive Analysis

Comparison of tire traction device price and installation in dollars



# Looking for new growth opportunities?

---



## STRATEGIC FIT

An ideal fit for existing companies whose goals and business strategy are to offer an automated tire traction device and cutting-edge technology.



## PRODUCT SYNERGY

Increase brand value with an extended product line to have options for your customers based on their needs.



## COMPETITIVE ADVANTAGE

Be the first to market with an advanced tire traction device solution.



## FASTER TIME TO MARKET

Bypass the development phase and launch sooner, capitalizing on existing market interest.



# A World of Possibilities

---

## MUTUAL BENEFITS

We believe combining our strengths could create a win-win for both companies. We are flexible in finding the right structure that maximizes value for all concerned, whether it's a partnership, acquisition, or intellectual property licensing.

---

Let us know how we can unlock incredible opportunities together.